



Virtuosity  
is in your hands



 **Glyde**<sup>™</sup>  
FILE PREP  
Root Canal Conditioner

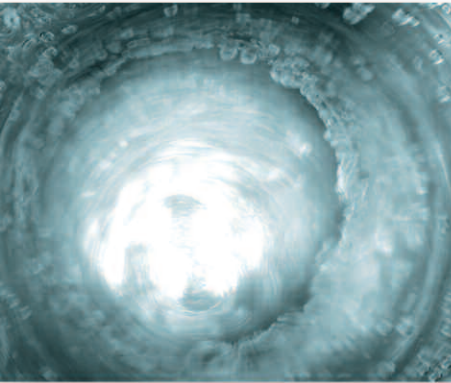
## Turn your File into a Magic Wand

- Chemically cleans and removes smear layer
- Lubricates and reduces the risk of instruments fracturing

**DENTSPLY**  
MAILLEFER

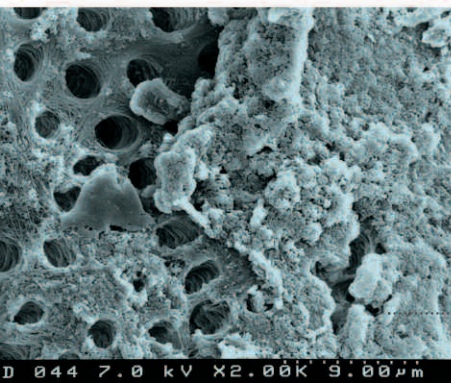
# GLYDE™ FILE PREP

Makes root canal treatment easier  
whichever preparation method is used



- ***Reduces the risk of instruments fracturing by acting as a lubricant***
- ***Helps to flush out debris***

- EDTA, a demineralising agent, softens dentine making calcified canals easier to shape.
- The combination of urea peroxyde causes an effervescent reaction which helps to remove smear layer in the canal up towards the crown.

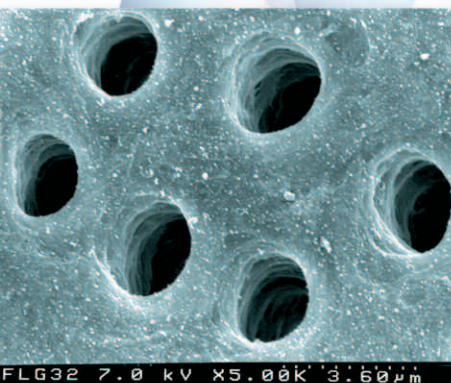


> Prof. Giuseppe Cantatore

- ***Canal walls free of smear layer due to EDTA and its softening effect***

- Using EDTA, a chelating (demineralising) agent, clean canal walls, completely free of smear layer are obtained and calcified canals are easier to shape.

.....smear layer



> Prof. Giuseppe Cantatore

- ***Chemically cleans and removes smear layer thanks to urea peroxyde***
- ***Complete removal by rinsing thanks to its completely water-soluble formulation***

- Urea peroxyde, an oxidising agent also used in bleaching processes, chemically cleans and removes anaerobic bacteria in the canal flora. The formulation, which is completely water-soluble, gives the mixture its gel consistency.

# Use of the GLYDE™ FILE PREP

**1.** Rinse with sodium hypochlorite and make the first entry into the canal using the first manual or rotary instrument.

**2.** Apply the Glyde™ File Prep straight into the cavity using the disposable tip or the single-use pack.

Syringe and interchangeable tips



**3.** Reinsert the first instrument and begin to prepare the canal.

**4 a.** No cross-contamination with **disposable doses.**



**4.** Rinse with hypochlorite and apply the Glyde™ again into the access cavity (also available in very practical disposable doses).

**5.** Continue preparing the canal alternating with sodium hypochlorite and Glyde™ between each instrument.

**6.** Once the canal has been shaped, rinse it with plenty of sodium hypochlorite until the effervescence subsides. Dry and fill.



# Turn your File into a Magic Wand

- Reduces the risk of instruments fracturing by acting as a lubricant
- Helps to flush out debris
- Canal walls free of smear layer due to EDTA and its softening effect
- Chemically cleans and removes smear layer thanks to urea peroxyde
- Complete removal by rinsing due to its completely water-soluble formulation.

## GLYDE™ FILE PREP

### A 0901 GLYDE™ SYRINGE KIT

- 3x3 ml syringes



### A 0902 GLYDE™ INTRO PACKAGE

- 2x3 ml syringes and 25x tips



### A 0903 GLYDE™ SYRINGE TIPS

- 50x tips



## GLYDE™ DOSES

### A 0905 GLYDE™ PACK

- 35 disposable doses of 0,5ml each

